



www.oamaruoperahouse.co.nz

Oamaru Opera House Venue Technical Specifications

Version 5.0_2016

Director
Frances McElhinney
+64 3 433 0781
fmcElhinney@waitaki.govt.nz

Technical Manager
Gregg Lovatt
+64 3 433 0782
+64 21 041 8367
glovatt@waitaki.govt.nz

Contents

1) Venue Layout

- a) Room spaces and orientation
 - i) Ground Floor
 - ii) Level One
 - iii) Room capacities
- b) Seating plans
 - i) Auditorium Stalls
 - ii) Auditorium Circle
 - iii) Inkbox

2) Venue facilities

- a) FOH facilities
- b) Catering facilities
- c) Conferencing facilities
- d) Backstage facilities

3) Technical specifications per room

- a) The Whitestone Contracting Auditorium
 - i) Section
 - ii) Flying Equipment
 - iii) Standard lighting rigs
 - iv) Masking packages
 - v) Rigging hardware
 - vi) Theatrical Stage Management facilities
 - (1) Tannoy
 - (2) Comm's
 - (3) Stage monitor camera
- b) Ink Box
 - i) Standard Lighting rig
 - ii) AV Equipment
 - iii) Masking Package
 - iv) Retractable seating
- c) Grand Foyer
- d) The Whitestone Cheese Empire Room
- e) The Board Room
- f) The Chambers
- g) The Study

4) General Technical

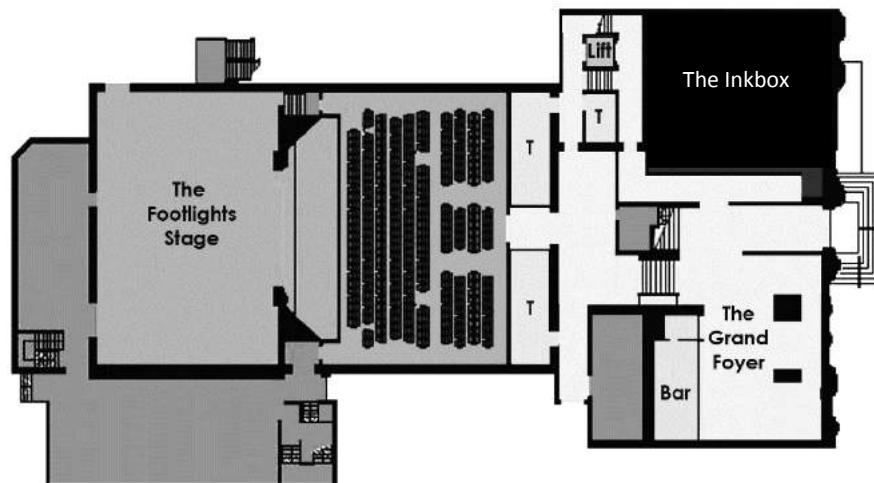
- a) Lighting equipment
- b) Sound equipment
- c) AV equipment
- d) Staging equipment
- e) Flying Equipment
- f) Cougar
- g) Other Theatre Equipment

N.B. All electrical equipment brought in must display a current safety test tag.

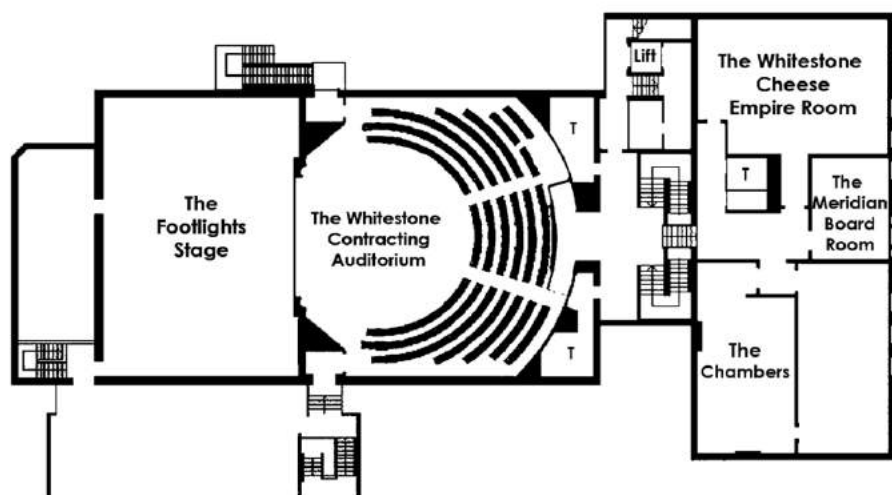
1) Venue Layout

a) Room spaces and orientation






i) Ground Floor



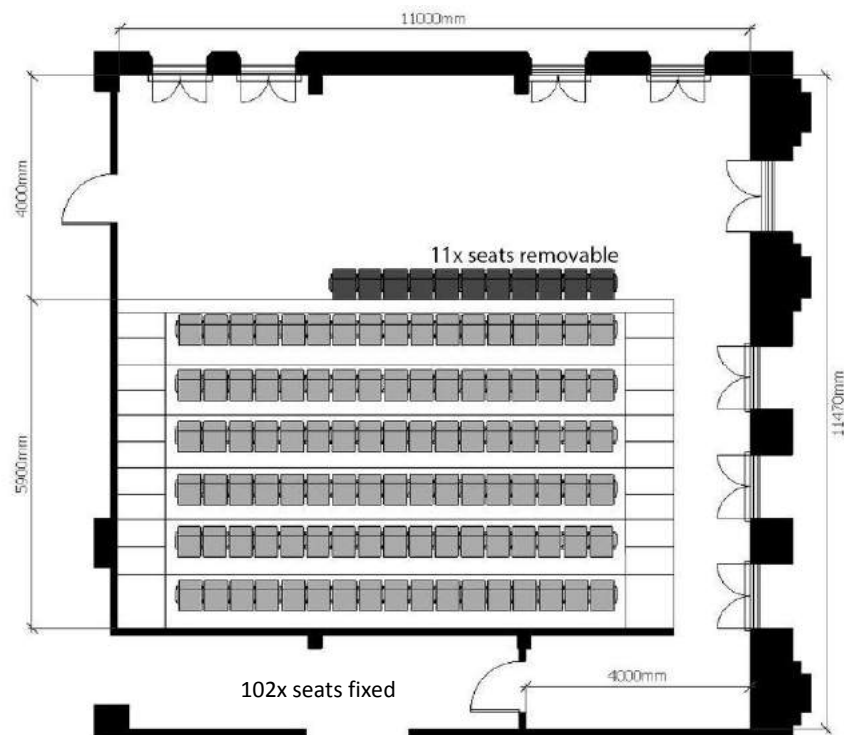
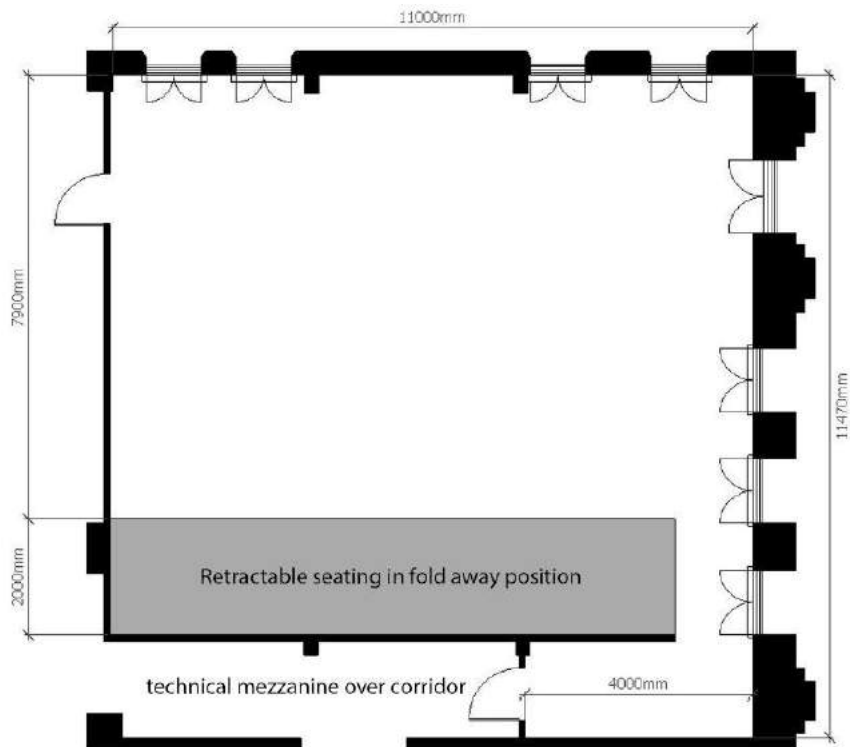
ii) Level One



iii) Room capacities

	 THEATRE	 BANQUET	 COCKTAIL	 BOARDROOM	 CLASSROOM
The Whitestone Contracting Auditorium	548	-	-	-	-
The Footlights Stage	120	-	250	150	100
The Inkbox	102-113	90	150	-	50
The Grand Foyer	-	-	150	-	-
The Whitestone Cheese Empire Room	100	90	140	-	45
The Chambers	50	30	70	15	20
The Board Room	-	-	-	18	15
The Study	-	-	-	4	-
The Atrium Suite	24	-	-	10	18

i) Inkbox



2) Venue facilities:

a) FOH facilities

- i) Full wet bar and café facilities
- ii) Grand Foyer lounge
- iii) Wireless internet.

b) Catering facilities

- i) Fully equipped catering kitchen
- ii) 25 x 1.8m diameter banquet tables + dressing.

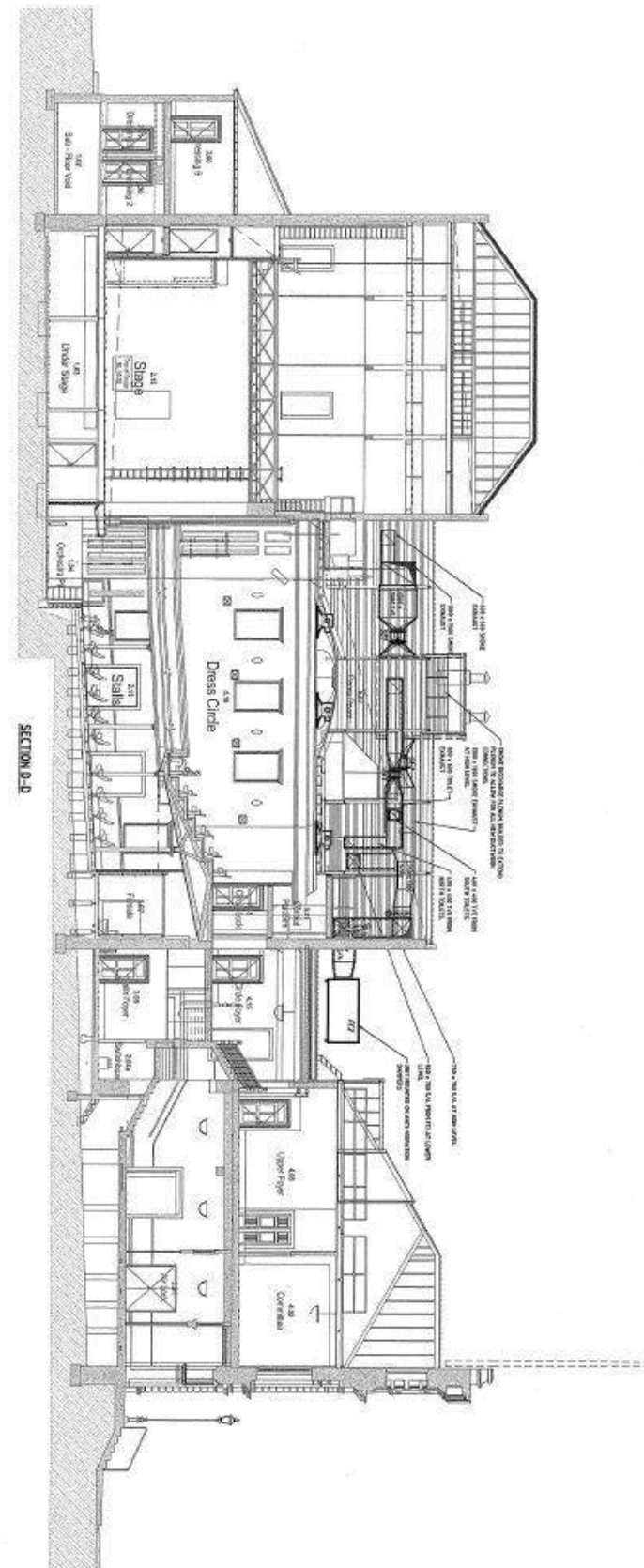
c) Conference facilities

- i) 25 x 1.8m conference tables + dressing
- ii) 300 x conference/banquet chairs
- iii) 1 x lectern.

d) Backstage facilities (Main Auditorium)

Description	Unit
4x person dressing rooms	6
Large chorus dressing rooms	2
Laundry facilities (washer & dryer)	1
Shower facilities	2
Wardrobe room/Production office	1
Company Green Room	1

- 3) Technical specifications per room
 - a) Main Auditorium
 - i) Section



Description	Dimensions (m)
Grid height	13.4
Roof truss height	11.4
Fly Floor pin rail height	7.6
Clearance under Fly Floor	6.0
Standard mask trim height	5.5
Flying batten fully OUT	12.8
Flying batten fully IN	1.08
Flying batten drift	11.72
Flying batten length	10.5
Flying winch full drift travel time at top speed	75 sec
Fly Floor pin rail	13.5
Proscenium width	8.0
Proscenium height	7.4
Stage depth - upstage of setting line	10.85
- downstage of setting line	1.5
Stagehouse width - S/L of centre line	9.12
- S/R of centre line	9.12

N.B. *Setting line - back of proscenium arch*
Centre line - centre of proscenium arch

ii) Flying equipment

OOH Auditorium Winch Positions and Standard House Hanging Plot

12x electric wire winches lifting steel box flying battens.
See "General Technical Specifications" below

Line/Winch #	Item/Std Rig	Distance (m)	Notes
Hand winch	House Border	0.25	
Counterweight	House Curtain	0.56	
1	Lx 1	1.3	
Handline	Border 1	2.3	
2	Leg 1	2.5	
Roof Truss		2.9	
3	Lx 2	3.45	
Handline	Border 2	4.4	
4	Leg 2	4.6	
5	Spare, A/V Screen position	4.9	
6	Tab Track 1	5.3	
7	Lx 3	5.8	
Roof Truss		6.1	
Handline	Border 3	6.8	
8	Leg 3	7	
9	Lx 4	8.3	
Handline	Border 4	8.8	
10	Leg 4	9.0	
Roof Truss		9.25	
11	Tab Track 2	10.0	
12	Cyc	10.65	

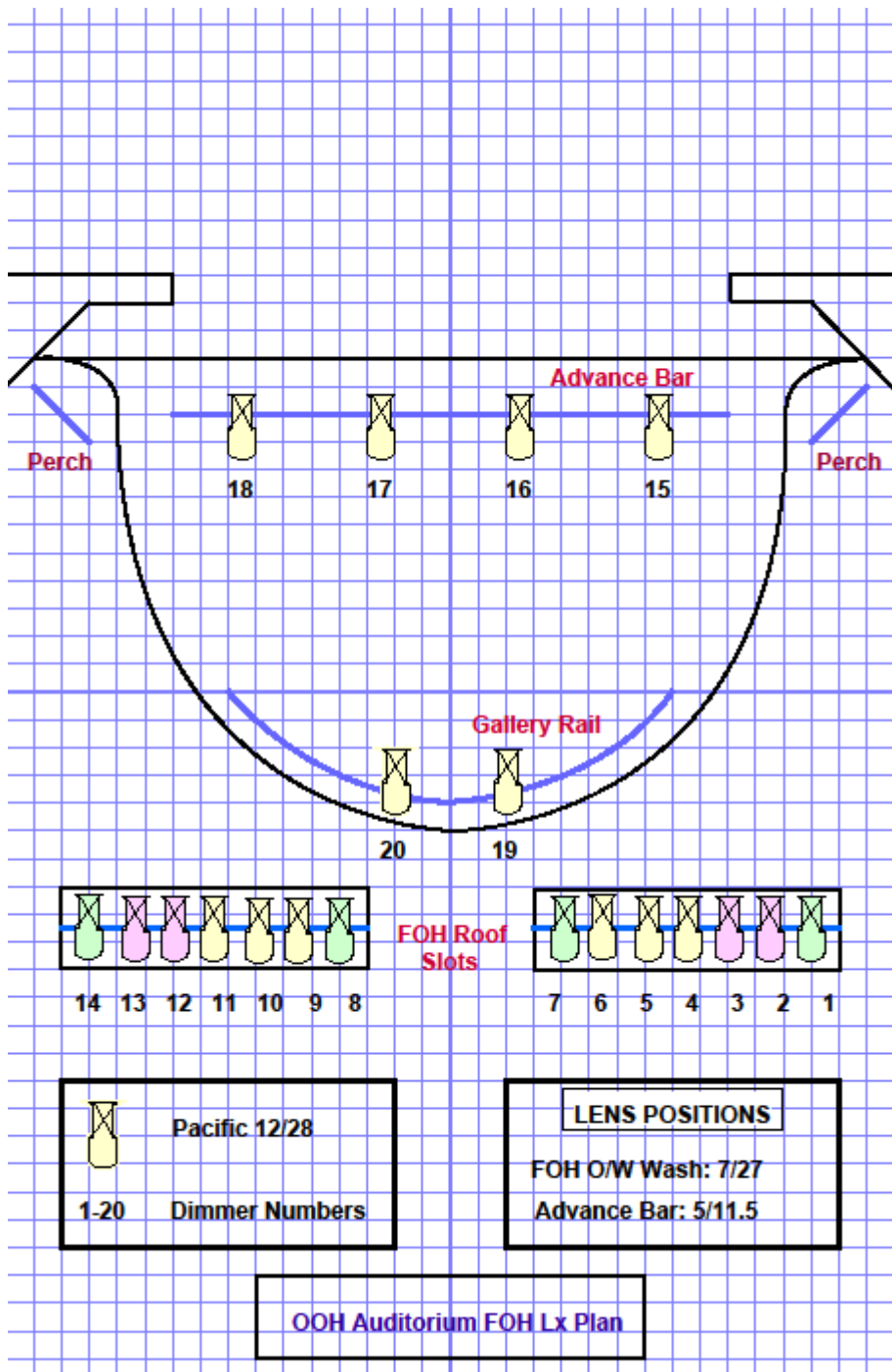
N.B. All measurements taken from the back of the Proscenium Arch

All flying winches are mounted on 2 x double bearers running up/down stage, @ 1.6 metres each side of grid centre line

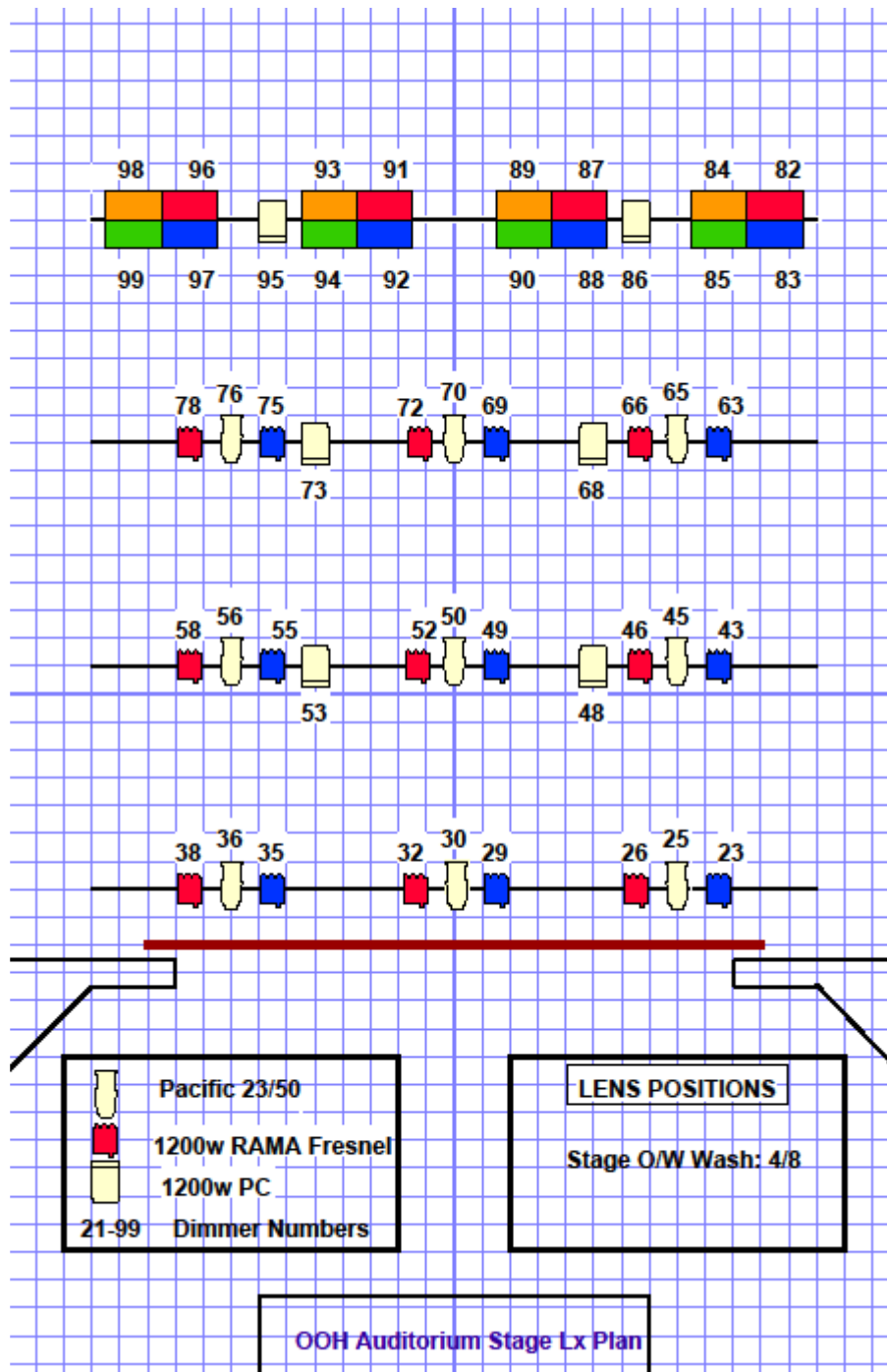
Climbing motors can be rigged off these bearers.

iii) Standard lighting rigs

(1) Auditorium Front Of House



(2) Auditorium Stage



N.B. The OOH Auditorium dimmers have WiFi Ethernet connectivity through an Enttec Ethernet-DMX converter



iv) Masking package

Standard "Legs & Borders" masking package (x4). See "General Technical Specifications" below

v) Rigging hardware

Limited rigging hardware is available, however such hardware is not generally supplied by the venue unless by prior arrangement.

vi) Theatrical Stage Management facilities

(1) Tannoy

Fully zoned backstage call, stage live feed and foyer paging system at Stage Manager's console.

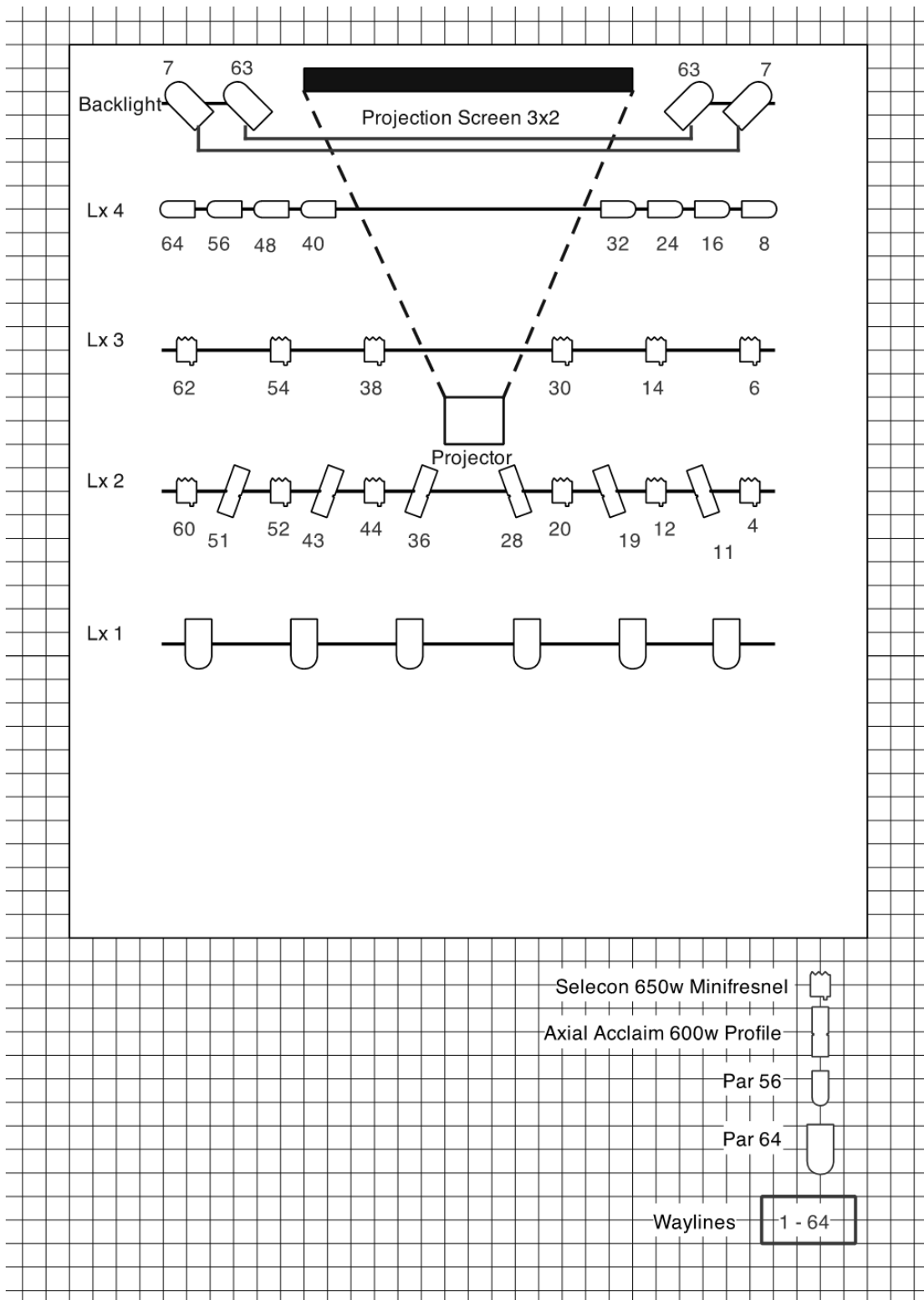
(2) Comm's

Channel linkable comm's master station at Stage Manager's console.

(3) Stage Monitor Camera

Full-colour stage monitor camera with distributed video throughout backstage and Grand Foyer big-screen television.

- b) Ink Box
i) Standard Lighting rig





ii) AV Equipment

VGA data projection and In-house Audio-Visual Theatre System

iii) Masking Package

The venue is fully draped in serge wool for "Black Box" theatre

iv) Retractable seating

Fully retractable arena-style seating.

c) Grand Foyer

i) House sound system

ii) Foyer paging and P/A system

iii) Samsung 46" LCD TV

iv) Auditorium stage AV monitoring

v) Wireless internet.

d) Empire Room

i) Panasonic LCD Projector & retractable front pro' 2.1mx1.6m AV screen

ii) VGA data projection and In-house Audio-visual theatre system.

e) Board Room

i) Conference board table & seating

ii) Samsung 46" LCD TV.

f) Chambers

VGA data projection.

g) The Study

Round Table meeting facility for 1-4 people.



4) General Technical

a) Lighting equipment

i) Luminaires

Description	Units	Location
Fresnel 1200 watt	18	Auditorium
Fresnel 650 watt	12	InkBox
PC 1200 watt	6	Auditorium
Pacific 1k Profile 12/28	30	Auditorium
Pacific 1k Profile 23/50	10	Auditorium
Axial Acclaim 600 watt Profile	6	InkBox
Par64 CP61/2 1000w Parcan	30	
Par 56 300w Parcan	12	InkBox
Par38 mini parcan	6	Auditorium
Aurora Cyc 4-Way	6	Auditorium

ii) Dimmers (WiFi connectivity available)

Description	Units	Location
LSC ECO Dimmer Unit	120	Auditorium
Theatreight "Powerpack"12-Channel Portable Dimmer pack	2	Inkbox

iii) Lighting Desks

Description	Units	Location
LSC Maxim XXL 120	1	Auditorium
Theatreight Nova 36	1	Inkbox

N.B. *WiFi Ethernet control is available for the Auditorium dimmers.*

b) Sound equipment

i) Sound Desk

Description	Units	Location
Soundcraft GB8	1	Auditorium
Soundcraft 6-Channel	1	InkBox

ii) Speaker System

Description	Units	Location
Meyer UPJ-1P Powered Centre Speakers	2	Auditorium
Meyer MM-4XP Powered In-fills	9	Auditorium
Meyer UPM1P Powered Speakers	9	Auditorium

iii) Induction Loop

Description	Units	Location
Ampetronic Ltd ILD500	1	Auditorium

iv) Microphones

Description	Units	Location
AKG WMS450 Wireless Microphones (2x Handheld, 2x Lapel)	4	
Shure Beta 57A	10	
Shure MX412/C Lecturn Gooseneck	1	

v) Comm's

Description	Units	Location
Clear-Com RS600 Belt Pack	8	Auditorium
Clear-Com Speaker Station	2	Auditorium
Comm's Headsets	8	Auditorium

vi) Other Sound Equipment

Description	Units	Location
Alto DI1 Direct Input Box	2	
Transonic portable CD/Tape player	1	
Logitec IPOD Dock	2	

c) Audio Visual equipment

Description	Units	Location
Sony Bravia 46" LCD TV	1	Grand Foyer
Samsung 46" LCD TV	1	Board Room
Sanyo projector + 3mx2m projection screen	1	Inkbox
Panasonic projector + 2mx1.5m projection screen	1	Empire Room
NEC projector	1	Chambers
Panasonic projector	1	Auditorium
Grandview 4x3m Rear/Front projection screen	1	Auditorium
Kramer VP-729 Presentation Switcher/Scaler	1	Auditorium
Sony DVD Home Theatre System	1	Inbox
Sony DVD Home Theatre System	1	Empire Room
Digitor 43cm (17") TFT LCD TV	3	
M-Audio Fast Track Ultra8 Audio Interface	1	
Laptop Computer – Macbook Pro	1	
Laptop Computer – PC	1	

d) Staging equipment

i) Stage Masking

Description	Unit	Location
Velvet Tabs (full) 6000mm x 6500mm (Set of 2)	2	Auditorium
Velvet Legs (full) 3500mm x 6500mm (Set of 2)	4	Auditorium
Velvet Borders (full) 12,000mm x 3000mm	6	Auditorium
Cyclorama Rear/Front projection 10,000mm x 7000mm	1	Auditorium
Roscoe Ballet Floor rolls 10,000mm x 1600mm	8	Auditorium
Silver Lame showcloth	2	Auditorium
White silk showcloth	2	Auditorium
Red Velvet Show Drape	2	Auditorium

ii) Staging Units

Description	Dimension	Unit
Prolyte Stage Dex (adjustable height)	2000mm x 1000mm	11
	1850mm x 1000mm	2
	1000mm x 1000mm	2

iii) Truss Towers

Description	Units	Location
Aluminium 300mm Square Box, 2.5m	4	Auditorium

e) Flying Equipment

Description	Unit	Location
Jands H500P Motorised Hoist	12	Fly Tower
- Working load limit 500kg		
- Variable flying speed 1 - 14 m/min		
- 75x50x10.5m Steel battens		

N.B. All winches used for standard lighting and masking rig

f) Cougar

Description	Unit	Location
Biljax Cougar hydraulic personnel lift platform	1	

g) Other Theatre Equipment

Description	Unit	Location
Orchestra Sconce Lights	25	
Orchestra Music Stands	40	
Microphone Stands	2	